



Siemens.com/mobility

QXRF1 Relay

Special relay (see description)

General data

Approximate Weight: 1.0 kg

Note: Refer to the following data sheets:

- 7-1-1 for general information and contact ratings.
- 7-2-1 for dimensions.
- 8.2 for tools.
- 8.3 for plugboard and connector details.

Refer overleaf for specific data.



Representational image only

Description

A relay unit comprising a transformer L-C filter and rectifier.

The filter is a 50 Hz low-pass type, fitted between the transformer secondary and the rectifier.

Its purpose is to render the unit immune to higher frequency harmonics produced by the traction power circuits.

This unit was initially designed for Singapore MRT depot track circuits.

The unit feeds a Track Relay QN3 B18512/20.

EMC Compliance

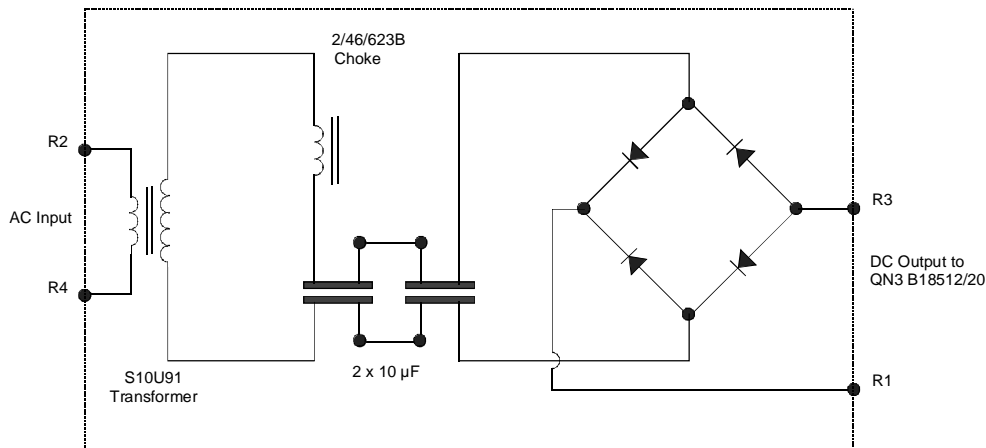
Q-Relays comply with the relevant emission requirements of EN 55014. It is considered that these relays have inherent immunity to in-service electro-magnetic disturbance. A Technical Certificate for EU Directive on EMC (89/336/EEC) has been obtained.

Packaging

Q-Relays are packed in a carton holding ten relays; the same container is used for quantities of four to nine relays. Quantities less than four are packed individually in cardboard boxes, as are all train-carried relays. Each container has a bar-coded label affixed to the outside, stating details of the packaged relay(s) and the quantity therein.

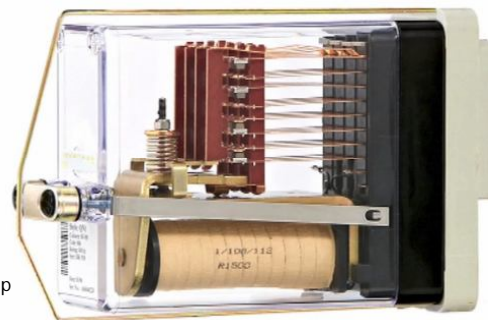
Technical data

SIEMENS Part No. (PAD No.)	RATED INPUT VOLTS AND CURRENT (V ac)	PIN CODE	NOMINAL OUTPUT VOLTS dc	PLUGBOARD	REQD No. OF CONNECTORS J4137/3	REMARKS
B18533/22	(3.3V to 3.7V 50 Hz), 165 to 0.185A	XFGJK	6.5	J4138/364	4	----



Un-drilled plugboard
Part No. E7218/1

Representation of Relay,
Plugboard and Retaining clip
(Clip Part No. J4136/1)



Siemens Ltd
Infrastructure & Cities Sector
Mobility and Logistics Division
Rail Automation
PO Box 79
Pew Hill
Chippenham
Wiltshire SN15 1JD
UK
www.siemens.com/rail-automation

Printed in the United Kingdom

Data Sheet 7-2-104

X342/55/000123 Revision 04

SIEMENS

The information within this document contains general descriptions of the technical options available, which do not always have to be present in individual cases. The required features should therefore be specified in each individual case at the time of closing the contract.